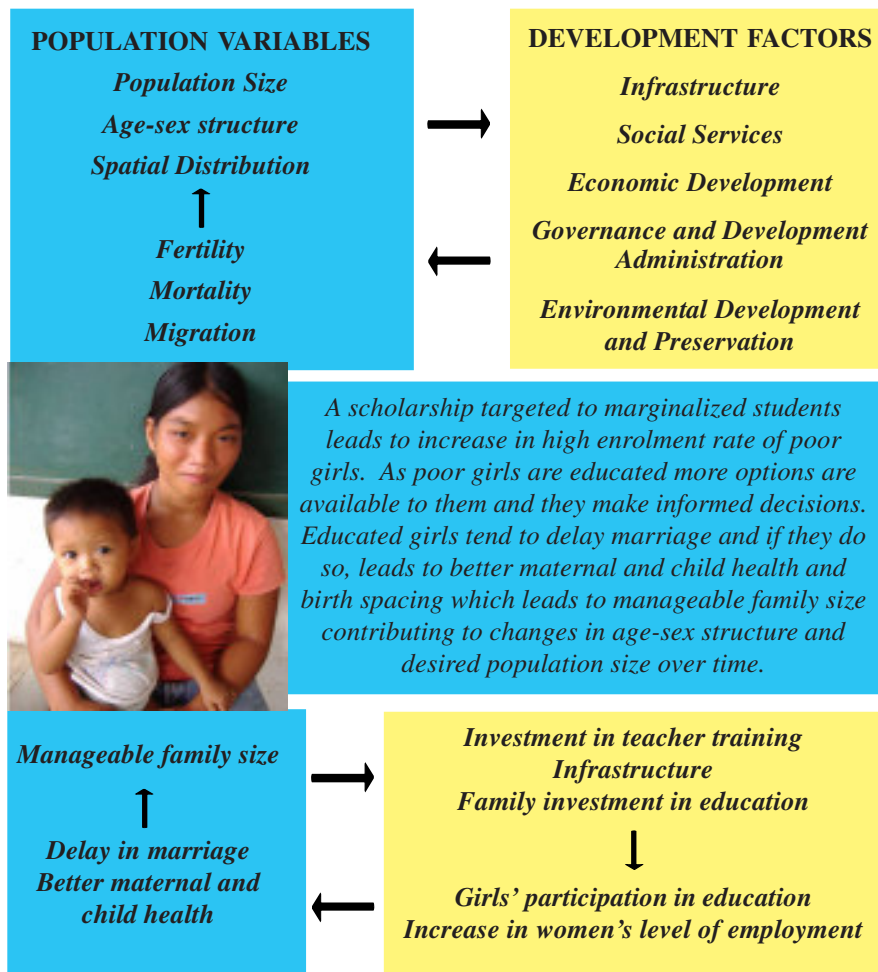


Getting to Know the Interaction of Population and Development

Population and development variables are distinct from one another that defining their relationships is not straightforward. A simple framework is shown below.



For more information about POPDEV Integration in Local Planning, please contact:
International Council on Management of Population Programmes
No 534, Jalan Lima, Taman Ampang Utama
68000 Selangor, Malaysia
Tel: (603) 42573234/ 42562358; Fax: (603) 42560029
E-mail: icomp@icomp.org.my; Website: www.icomp.org.my



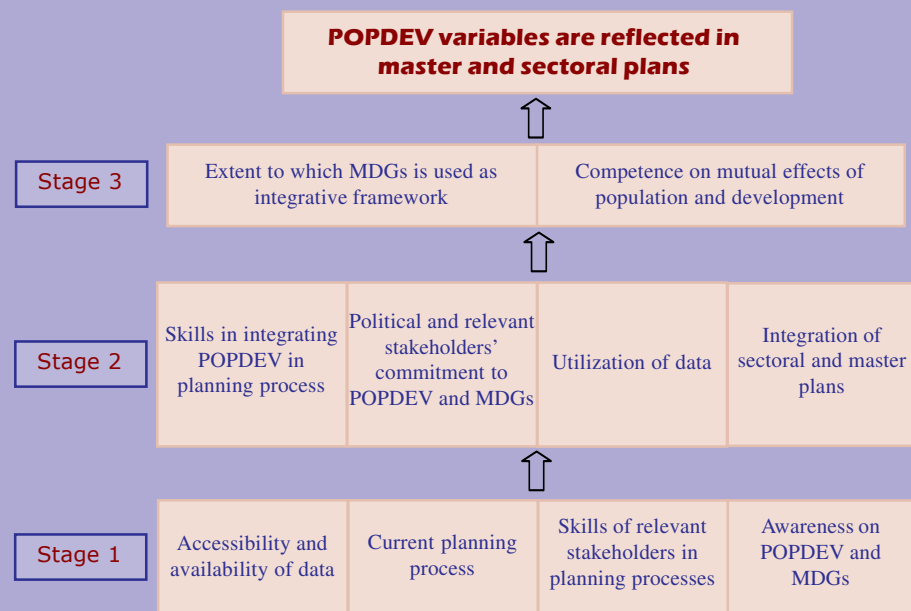
POPDEV IN LOCAL PLANNING

The Building Blocks

It is widely accepted that population and development (POPDEV) should not be pursued in isolation from one another. Attempts to explicitly integrate the relationship of these factors into development planning are few. Rather than sophisticated methodologies, a pilot project in the Philippines demonstrates that what local governments need are practical and simple mechanisms.

Since the ICPD in 1994, many governments around the world adopted the integration of POPDEV in development planning. Progress thus far has been slow. Identified hindrances included the abstract nature of population-development nexus, lack of practical and ready-to-use information, and the lack of analytical framework for planners. ICOMP has developed the **Framework for POPDEV Integration in Planning** which is currently being pilot tested in the Philippines. This results-based tool is like a road map which local government units (LGUs) could use to work their way to integrate POPDEV in their planning processes.

Framework for POPDEV Integration in Planning



Operationalizing the Framework

Staged Process Approach

- The framework works in stages from the base upwards.
- Each stage is composed of building blocks which are pre-requisites to move up to the next stage.
- The blocks in each stage serve as inputs for the next stage until the ultimate goal—POPDEV variables are reflected in master and sectoral plans— is achieved.



Steps in Applying the Framework

1. **Assessment Process**— stakeholders examine their current situation against the necessary blocks in each stage.
2. **Validation**—cross-check of information and matching data with intuition of stakeholders to ensure the validity of the assessment results.
3. **Critical Stage for Intervention** — identifying the critical stage by which the interventions will focus on.
4. **Action Planning**—development of key strategies and activities which will help enhance the necessary building blocks.
5. **Implementation through Mentoring**— stakeholders are assisted by capacity builders and experts to implement their activities through learning by practice
6. **Monitoring and Evaluation**—activities are tracked using key success indicators. Evaluation is done periodically.

Box 1. The Building Blocks

Stage 1

- Awareness on POPDEV and MDGs
- Skills of relevant stakeholders in planning processes
- Current planning process
- Accessibility and availability of data

Stage 2

- Integration of sectoral and master plans
- Utilization of data
- Political and relevant stakeholders' commitment to POPDEV and MDGs
- Skills in integrating POPDEV in planning process

Stage 3

- Competence on mutual effects of population and development
- Extent to which MDGs is used as integrative framework

Pilot Testing

The framework is currently being pilot tested in three LGUs in the Philippines in partnership with the Commission on Population with support from the UNFPA:

- **Isulan, Sultan Kudarat**—rural, devolved, plain, agricultural
- **Upi, Maguindanao**—rural, undeveloped, upland, agricultural with significant tribal population
- **Tagbilaran City, Bohol**—urban, island, with seasonal migrant population

Findings

- While many stakeholders are aware of POPDEV, most find their relationships abstract and difficult to operationalize;
- MDGs were heard through the media; however, most stakeholders could not relate their local situation to these global goals
- Access to updated and sophisticated data is very important; yet, absence of which is not deterrent enough for LGUs to pursue integrating POPDEV in planning
- While political commitment could pave the way for the acceptance of POPDEV approach into planning, it should be coupled with stakeholder's commitment and competencies
- LGUs prepare different plans which require integration and alignment

Strategies

In order to move up from their current stages, the LGUs developed a mix of strategies:

- Revisiting current planning process to determine how the system could adopt POPDEV approach
- Training and mentoring on POPDEV approach
- Awareness raising on MDGs utilizing different avenues
- Setting up Geographic Information System to enhance data management and analysis
- Targeted advocacy for POPDEV integration to planning